

 SEETEL

MOBILE CHARGER with Battery 270 kWh



POWERED BY

V O L V O
P E N T A

SAFETY MANAGEMENT



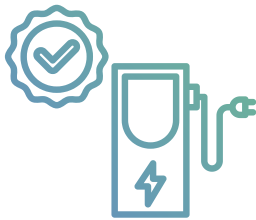
Battery & Electrical Safety

- High Voltage Isolation
- Multi-layer Battery Protection
- Thermal & Fire Safety



Protective Safety Mechanisms

- Auto Power Cut-off During Driving
- Abnormal Charging Shutdown Protection
- Door/E-stop Interlock



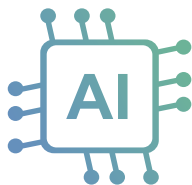
Charging Control & On-site

- Charging Connector Management
- Multi-protocol Compatibility
- User-friendly Interface



Remote Monitoring, Maintenance & Cybersecurity

- Real-time Remote Monitoring
- Predictive Maintenance
- Cybersecurity & Data Backup



AI-driven diagnostics and predictive maintenance

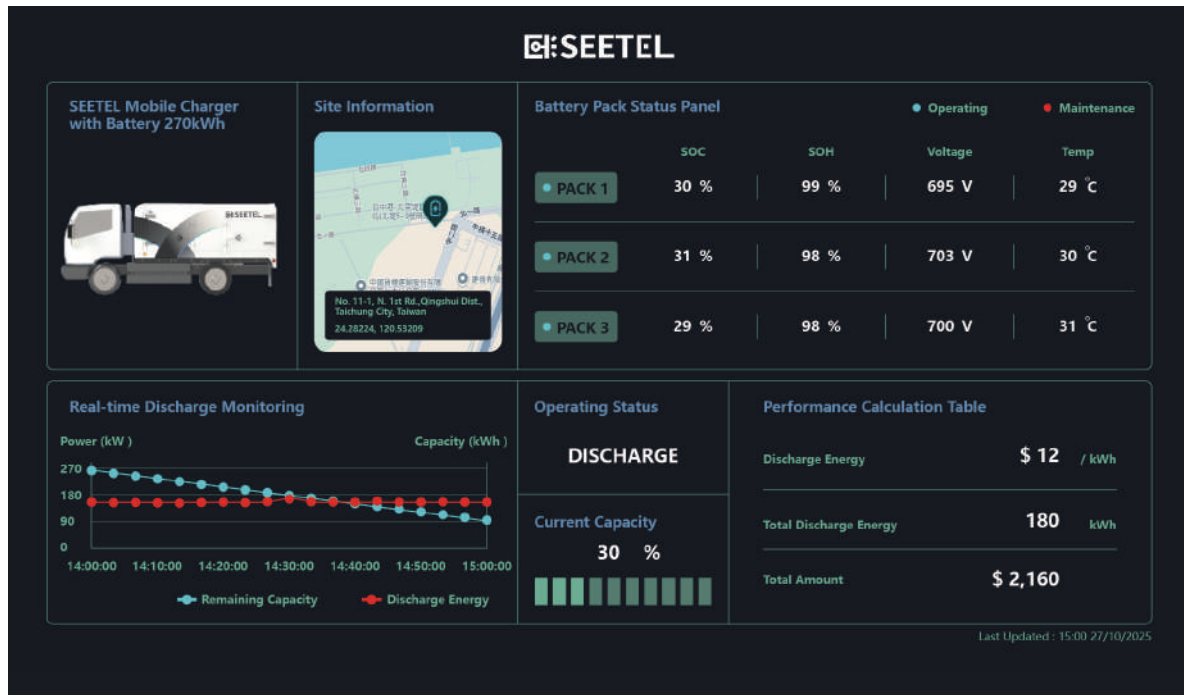
- Rescue Demand Prediction
- Battery Health Forecasting
- Smart Charging Optimization



Billing & Cost Management

- Flexible Pricing Models
- External Billing & E-Invoicing
- Customer Account & Billing Records

Smart EMS, Swift Response



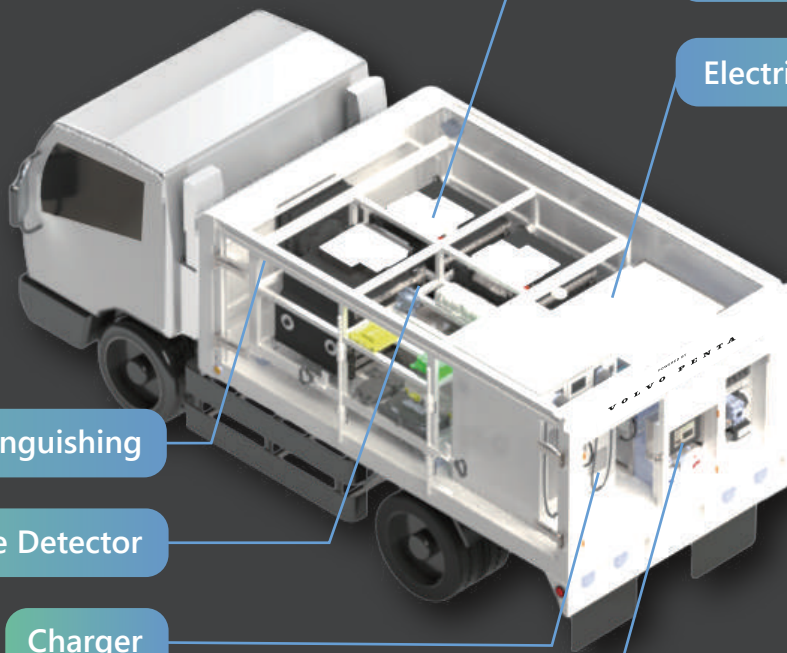
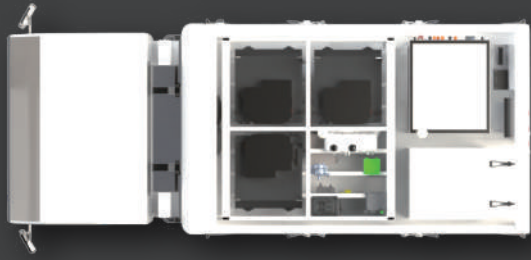
Equipped with real-time insights and adaptive learning, EMS accelerates energy forecasting and optimizes dispatch with unmatched precision.

Mobile Charging Solution



It is a reliable mobile charging solution designed to meet diverse electric equipment needs, including boost charging, establishing temporary charging stations, or delivering on-demand recharging services.

270 kWh



Battery Rack Assembly

Electrical Control Cabinet

Aerosol Fire Extinguishing

Smoke Detector

Charger

HMI Control Box

System Specification

Battery Chemistry	NCA (Nickel Cobalt Aluminum) – Cylindrical Cell
Total Installed Energy	270 kWh (90 kWh * 3)
Rated Capacity	289.38 Ah
System Voltage (Min/Nom/Max)	500 V / 660 V / 750 V
Continuous Charging Rate	0.5C
Continuous Discharging Rate	1C
Ambient Operating Temperature	-20°C to +40°C
Max Operating Altitude	3,000 meters
Cooling System Type	Compressor (Active Cooling Unit)
Fire Suppression System	Aerosol Fire Extinguishers
AC Input Voltage	220V / 380V AC, 3-phase, 50–60Hz ±15%
Charging Time	Approx. 7–8 hrs at 60A, 380V, 3-phase
Input Plug Type	CEE plug 100A
Container Dimension (LxWxH)	4150x2100x1300 mm

Charger

Max Power	180 kW
Simultaneous Output	Balance Distribute
Efficiency	>94%
Charger Plug Type	CCS2

Vehicle

Gross Vehicle Weight	5,000 kg	Chassis Curb Weight (Approx.)	2,120 kg
----------------------	----------	-------------------------------	----------

Weigh of BESS Components

Battery*3	1,599 kg	Junction Box	1.27 kg
Battery Rack	260 kg	Pump Unit_BESS	3.2 kg
Heater_BESS	5.7 kg	Charger	265 kg
Expansion Tank	2.53 kg	Power Control Panel	20 kg
Control Unit - HCPU - ECM4_BESS	1.9 kg	HMI Panel Assembly	15 kg
Control Unit - TGW3_BESS	1.2 kg	Charger Frame	80 kg
Cooling Package_BESS	50 kg		
Total	4909.8kg		

Notice: This is not a final specification. Some parametric limits are subject to change.

Power Your Success

